

Office of the Deputy Commissioner for Systems

July 2022

**Disability Case
Processing System
(DCPS)**

**Division of Business
Services**

**Division of Workload & Case
Management**

**Division of Product
Lines**

**Services
Branch**

**Case Request & Processing
Branch**

**Product Lines
Branch**

Office of Systems

July 2022

Office of Benefit Information Systems (OBIS)

**Division of SSI Processing
Systems**

**Division of Payments &
Debt Recovery Processing**

**Division of T2 Claims &
Online Solutions**

**Division of Post
Entitlement, Infrastructure
& Cyclical**

**Division of Workload
Support & Business
Intelligence**

**Business Intelligence &
Income Development
Branch**

**Title 16 & Special
Payments
Branch**

**Title 2 Claims
Processing
Branch**

**T2 Infrastructure
Analysis
Branch**

**Testing & Release
Planning
Branch**

**Claims, Computation &
Data Support
Branch**

**Title 2 Payments &
Update
Branch**

**Claims Processing
Support
Branch**

**T2 Infrastructure
Development
Branch**

**Paperless
Branch**

**Income, Business
Intelligence &
Computations Analyst
Branch**

**Debt Recovery
Branch**

**Online Claims Solutions
Branch**

**Cyclical Processing
Branch**

**T2 Business Intelligence
& Selections
Branch**

**Debt Recovery Analysis
Branch**

Office of Systems

July 2022

**Office of Benefit Information Systems
(OBIS)**

Continued

**Division of T2
Computations, Eligibility &
Medicare**

**Division of SSI &
Representative
Payee**

**T2 Computations
Branch**

**Eligibility Development
Branch**

**Medicare
Branch**

**Eligibility,
Redetermination &
Appeals
Branch**

**T2 Eligibility &
Entitlement
Branch**

**Representative Payee
Processing
Branch**

**Representative Payee
Services
Branch**

Office of Systems

**Enterprise
Architecture
Staff**

**Office of the Deputy
Commissioner &
Chief Information Officer**

**Digital
Services
Staff**

**Management
Support
Staff**

**Administrative
Management &
Controls Staff**

Office of Disability Information Systems (ODIS)

**Division of
Disability Hearing &
Appeals Analysis &
Quality**

**Division of
Disability Electronic Folder
Processing**

**Division of
Disability Hearings &
Appeals Processing**

**Division of
Disability Evidence
Acquisition**

**Division of
Disability Online
Access & Analysis**

**Disability Analysis
& Notices
Branch**

**Work Review &
Forms
Branch**

**Hearings & Appeals
Legacy Applications
Branch**

**Disability Evidence
Collection
Branch**

**Disability Review & Work
Incentives
Branch**

**Disability Analysis &
Quality Assurance
Branch**

**Disability Systems
Analysis
Branch**

**Hearings & Appeals
Review
Branch**

**Electronic
Evidence
Branch**

**Disability Online Access
and MI
Branch**

**Disability Determination
& Court Case
Branch**

**Disability Intake &
Interface
Branch**

**Hearings & Appeals
Support
Branch**

**Disability Management
Information Reporting
Branch**

**Disability Modernization
Branch**

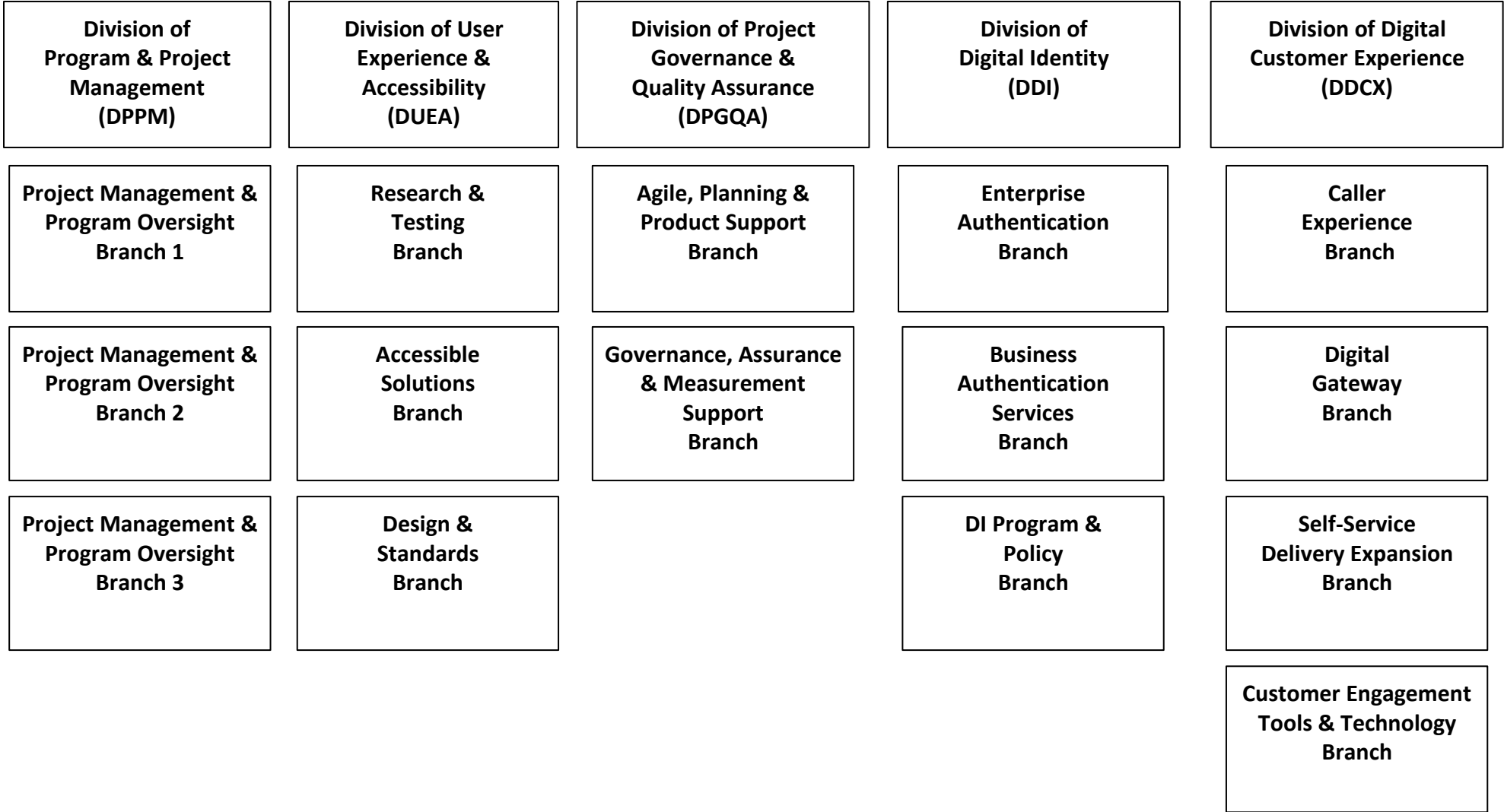
**Hearings & Appeals Case
Processing
Branch**

**Disability Appeals &
Medical Review
Branch**

Office of Systems

July 2022

Office of Digital Transformation (ODT)



Office of Systems

July 2022

**Office of Enterprise Information Systems
(OEIS)**

**Division of Technician Support &
Antifraud
(DTSAF)**

**Division of Communications
(DOC)**

**Division of Financial &
Administrative Systems
(DFAS)**

**Anti-Fraud & Technician Support
Branch**

**Enterprise Communications
Branch 1**

**Financial & Administrative
Development
Branch**

**Benefits Support
Branch**

**Enterprise Communications
Branch 2**

**Financial & Administrative
Analysis
Branch**

**Audit Systems
Branch**

**Enterprise Communications
Branch 3**

Office of Systems

**Office of Enterprise Information Systems
(OEIS)**

**Division of Earnings Systems
(DES)**

**Division of Enumerations & Death Systems
(DEDS)**

**Division of Data Exchange
(DDE)**

**Earnings Processing & Government Services
Branch**

**Enumeration & Death Development
Branch**

**Verifications & Exchanges Development
Branch**

**Earnings Operations & Data Exchange
Support
Branch**

**Enumeration & Death Analysis
Branch**

**Verifications & Exchanges Analysis
Branch**

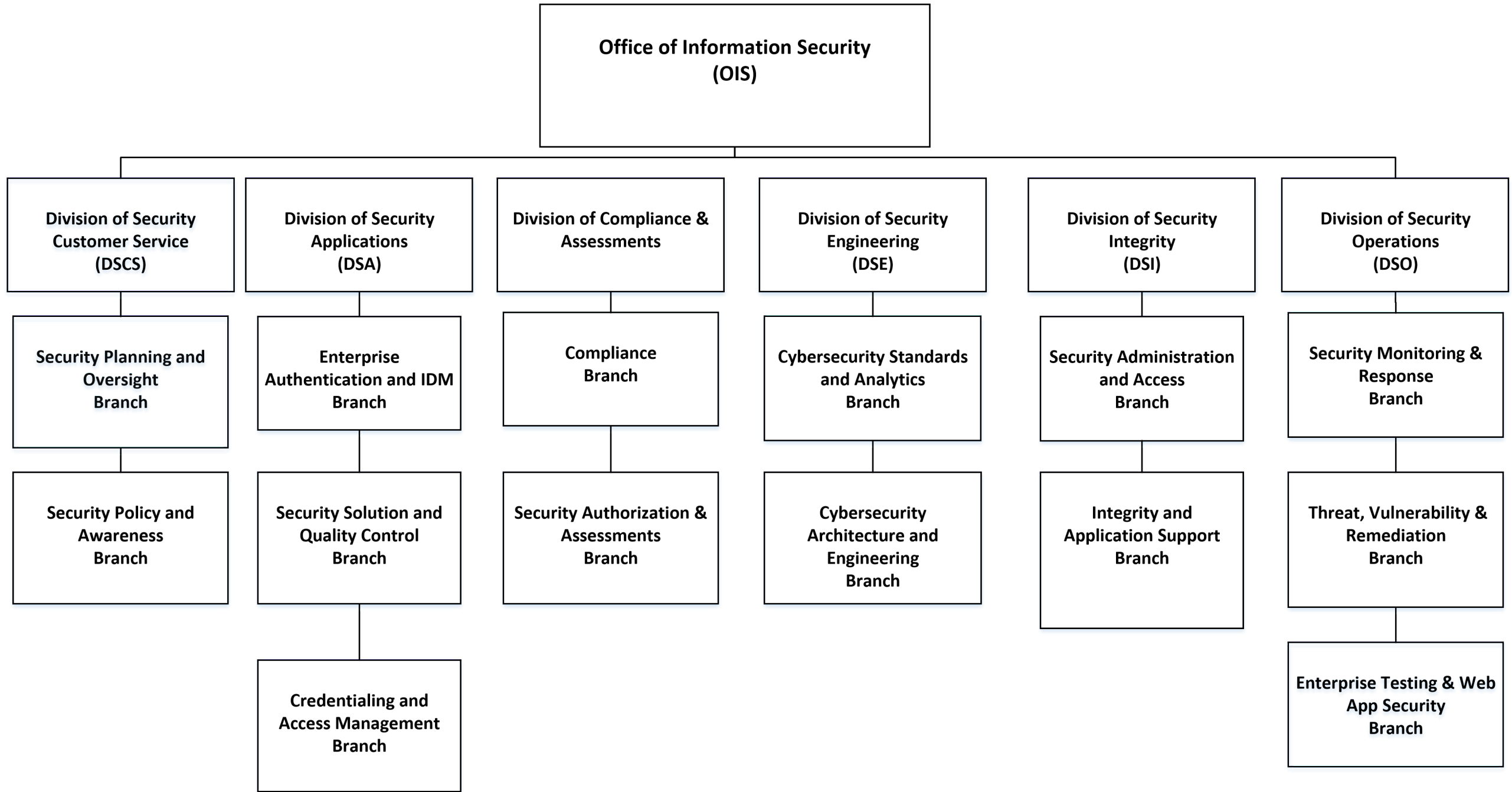
**Employer & Earnings Support
Branch**

**Document Management
Branch**

**Earnings Data
Branch**

Office of Systems

July 2022



Office of Systems

**Office of IT Financial Management
and Support
(OITFMS)**

**Division of Budget, Enterprise
Strategy
and Training
(DBEST)**

**Enterprise Information
Technology Budget
Branch**

**IT Training
Branch**

**Division of Investment
Management and Enterprise
Services
(DIMES)**

**IT Liaison
Branch**

**IT Enterprise BPA
Branch**

Office of Systems

Office of Systems Architecture (OSA)

**Division of Enterprise
Architecture & Data
Administration
(DEADA)**

**Division of
Database
Systems
(DDS)**

**Division of Enterprise
Software Engineering
Infrastructure
(DESEI)**

**Division of
Testing
Services
(DTS)**

**Division of
Enterprise Software
Architecture
(DESA)**

**Division of
Business
Intelligence & Data
(DBID)**

**Data Administration/Data
Quality
Branch**

**Database
Management
Branch**

**Client
Services
Branch**

**Test
Execution
Branch**

**Enterprise Content
Management
Branch**

**BI Application
Development
Branch**

**Data Management
Architecture
Branch**

**Database
Support
Branch**

**Customer
Engagement
Branch**

**Testing
Technology
Branch**

**Modern Services and
Software Support
Branch**

**BI Data Management &
Services
Branch**

**Software Governance &
Compliance
Branch**

**Database
Development
Branch**

**ESEF Mainframe
Infrastructure
Branch**

**Test Data
Management
Branch**

**Person Information and
Electronic Records
Branch**

**Business Intelligence
Delivery
Branch**

**Infrastructure
Services
Branch**

**Data Delivery and
Testing Support
Branch**

**LAN
Services
Branch**